

Call sign	118.925	119.300	119.325	120.900	124.375	124.850	125.325	Emergency
U.A.E. CENTRE / RADAR	125.375	125.925	128.125	128.250	129.500	132.150	243.000	121.500

EN-ROUTE CHART - EMIRATES FIR
 Bearings are Magnetic
 (MAG VAR as of 01 JUL 2017 is used for calculating Track Magnetic Bearing)^(d)
 ELEV. ALT. HGT IN FEET
 Distances in NM
 Refer ENR 5.1 for vertical limits details
 RNAV 1 MANDATORY

LEGEND

- Aerodrome
- Significant Points
- ATS Routes
- Airspace Restrictions
- Danger Area
- Prohibited Area
- Restricted Area
- Fly-by On Request
- Fly-by Compulsory
- Fly-over On Request
- Airspace
- CTA
- CTA - Subdivision
- FIR
- En-Route Holding
- CDR Routes
- CDR 1
- CDR 3

NOTES

(19) CDR 3 between MIROT - REVAV from 4500 FT to FL250
 (d) Between KUPRO - MIBRU and KUMSI - TOVOX MAG VAR as of 12 JAN 2023 is used for calculating Track Magnetic Bearing

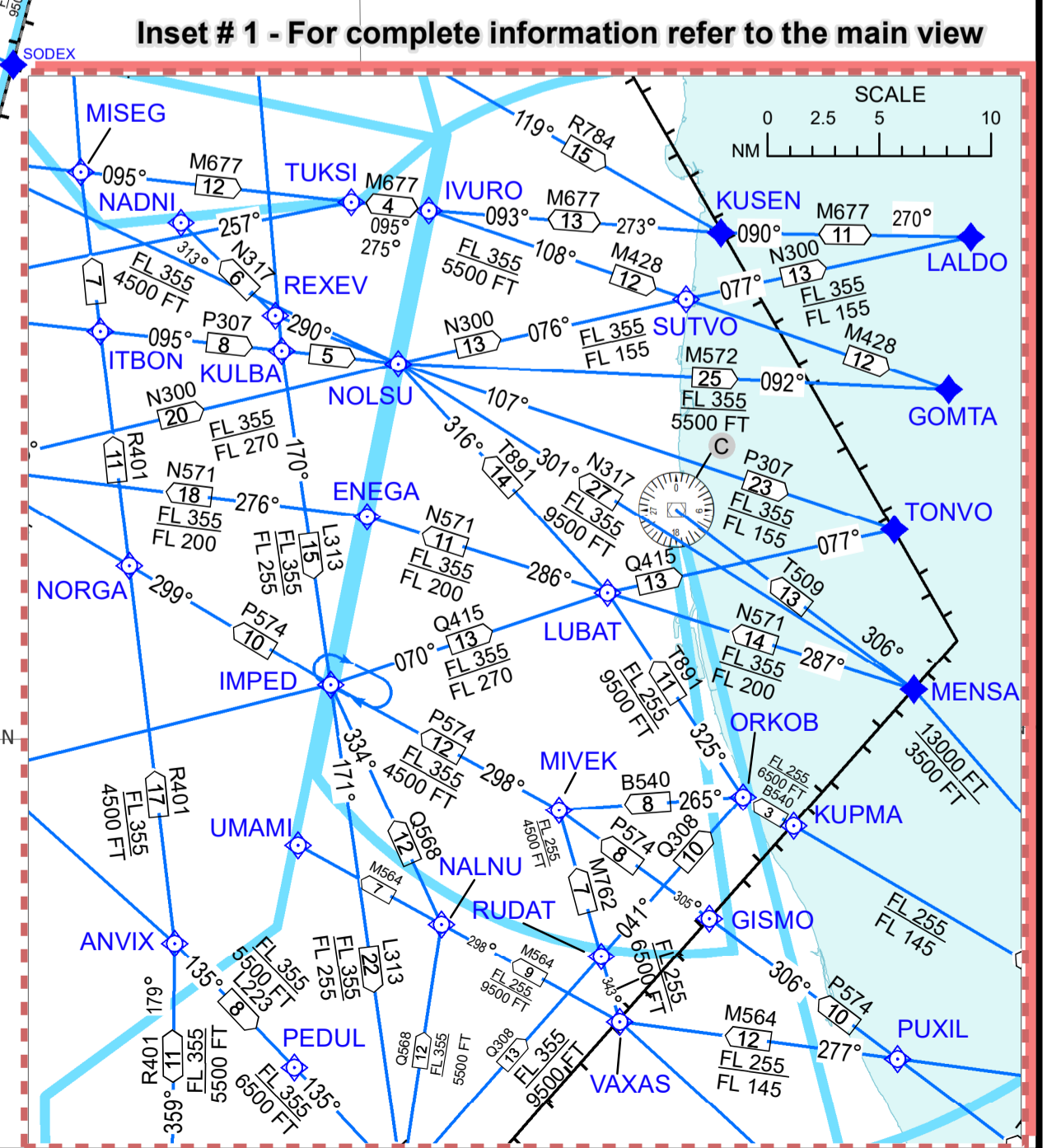
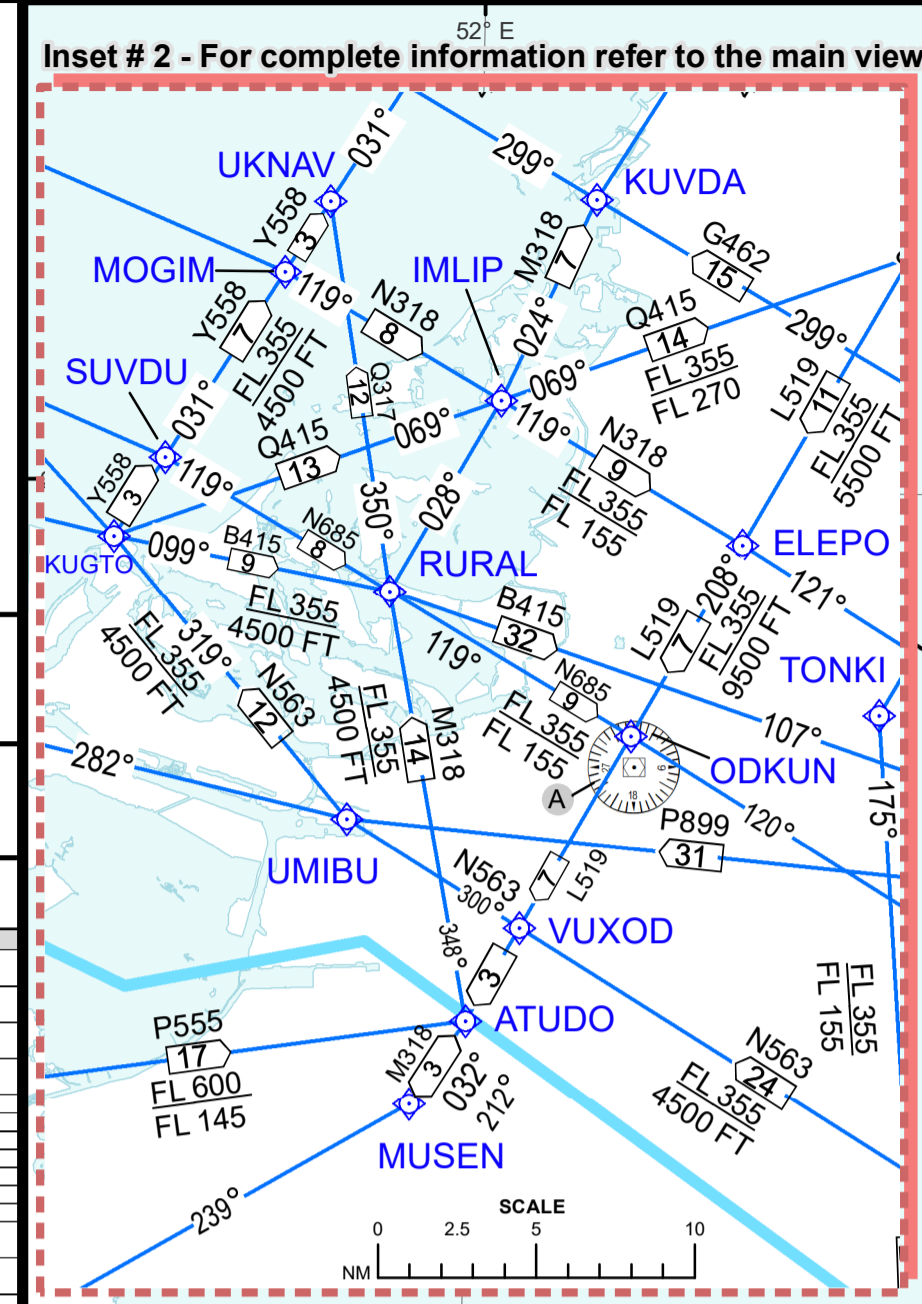
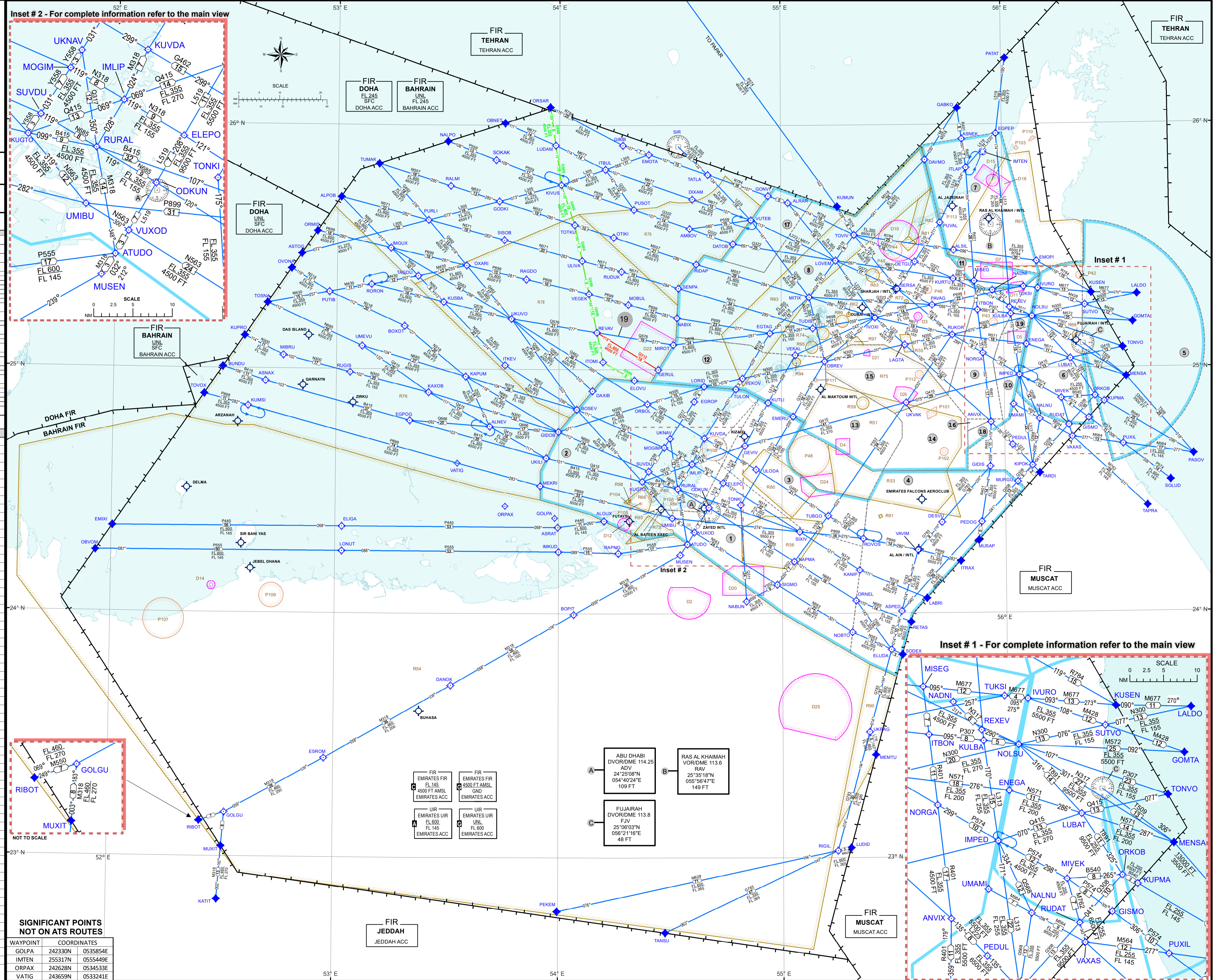
Consult NOTAM for current information
 Not intended as Authoritative guidance for routes in external FIRs
 AIRAC 09/2024 effective 05 SEP 24

TABLE - 1
 (For complete CTA information including accurate vertical limits refer UAE AIP ENR 2.1)

No	Name	Class	Upper Limits	Lower Limits	Channel (MHz)
1	ABU DHABI CONTROL AREA (U) CENTRAL	C	1000 FT	1000 FT	124.400
2	ABU DHABI CONTROL AREA (U) WEST	C	1000 FT	1000 FT	124.300
3	ABU DHABI CONTROL AREA (U) NORTH	C	1000 FT	1000 FT	124.500
4	ABU DHABI CONTROL AREA (U) EAST	C	1000 FT	1000 FT	124.600
5	FUJAIRAH CONTROL AREA (U)	C	1000 FT	1000 FT	124.800
6	MASARFAH CONTROL AREA (U)	C	1000 FT	1000 FT	124.900
7	MASARFAH CONTROL AREA (S)	C	1000 FT	1000 FT	124.950
8	DUBAI CONTROL AREA (U)	C	1000 FT	1000 FT	124.675
9	DUBAI CONTROL AREA (U)	C	1000 FT	1000 FT	124.675
10	DUBAI CONTROL AREA (U)	C	1000 FT	1000 FT	124.675
11	DUBAI CONTROL AREA (U)	C	1000 FT	1000 FT	124.675
12	DUBAI CONTROL AREA (U)	C	1000 FT	1000 FT	124.675
13	DUBAI CONTROL AREA (U)	C	1000 FT	1000 FT	124.675
14	DUBAI CONTROL AREA (U)	C	1000 FT	1000 FT	124.675
15	DUBAI CONTROL AREA (U)	C	1000 FT	1000 FT	124.675
16	DUBAI CONTROL AREA (U)	C	1000 FT	1000 FT	124.675
17	DUBAI CONTROL AREA (U)	C	1000 FT	1000 FT	124.675
18	DUBAI CONTROL AREA (U)	C	1000 FT	1000 FT	124.675
19	DUBAI CONTROL AREA (U)	C	1000 FT	1000 FT	124.675

SIGNIFICANT POINTS

WAYPOINT	Coordinates	WAYPOINT	Coordinates	WAYPOINT	Coordinates
ALGXV	242247N 054120E	KIPOK	243611N 0560719E	PUSOT	253919N 0542011E
ALNEV	244601N 0534122E	KIVUS	254522N 0540032E	PUTIB	251900N 0525755E
ALPOB	254218N 0530055E	KUGTO	243231N 0542224E	PUVAL	253558N 054258E
ALRAB	254058N 0550149E	KULBA	251326N 0560153E	PULIL	244117N 0563145E
ALSIL	252911N 0554639E	KUMSI	245050N 0523619E	RAGDO	252212N 0535106E
AMBOV	253439N 0543512E	KUMUN	254000N 0551512E	RALIM	254505N 0533033E
ANVIX	244655N 0555616E	KUPWA	245148N 0562648E	RAPNO	241452N 0541599E
ASNAX	245659N 0524054E	KUPRO	250805N 0523513E	RETAS	235754N 0553423E
ASNEK	255631N 0554905E	KURTU	252211N 0554625E	REVAV	250909N 0541012E
ASPED	240036N 0553154E	KUSBA	251634N 0532847E	REXEV	251502N 0560137E
ASRAT	242114N 0535944E	KUSEN	251828N 0562340E	RIBOT	230844N 0522428E
ASTOG	252822N 0525025E	KUTLI	245151N 0545618E	RIDAP	252554N 0543701E
ATUDO	241708N 0543432E	KUVDA	244309N 0543909E	RIGIL	230146N 0551430E
BOFIT	235947N 0540404E	LABRI	240344N 0553842E	RORON	252053N 0530916E
BOSEV	245013N 0540449E	LAGTA	250602N 0553315E	ROVOS	241825N 0552143E
BOXOT	251039N 0531817E	LALDO	251805N 0563600E	RUDAT	244605N 0561714E
BUNDU	250024N 0522924E	LONUJ	241520N 0530149E	RUDUK	252408N 0541650E
DANOK	234220N 0533111E	LORID	245553N 0543904E	RUGIS	245916N 0530340E
DATVO	253053N 0544657E	LOVEM	252645N 0551440E	RUKOR	250823N 0554603E
DIAVBO	255127N 0553900E	LUBAT	250223N 0561749E	RURAL	243045N 0543156E
DAMIB	245447N 0549011E	LUDAM	255508N 0535859E	SEMPA	252000N 0543210E
DESUV	242222N 054253E	LUDID	230122N 0551800E	SERSA	251945N 055318E
DEIGU	252624N 0553605E	MEKRI	243123N 0535500E	SIGMO	240710N 0545807E
DIKAM	254151N 0543557E	MEMTU	232517N 0552443E	SISOB	253150N 0534599E
EGPEP	254747N 0555893E	MENSA	245750N 0563249E	SINIV	242059N 0552489E
EGPOG	244727N 0531950E	MIBRU	250321N 0524040E	SODEX	234954N 0533020E
EGROP	245211N 0543625E	MIROT	250609N 0543049E	SOKAK	255131N 0534251E
ESTAG	250856N 0545625E	MISEG	252134N 0555205E	SOLID	243223N 0564421E
ELEPO	243211N 0544410E	MITIX	251746N 0560730E	SUTVO	251531N 0562153E
ELIGA	242121N 0530148E	MIVEX	245240N 0561516E	SUVDU	243501N 0542410E
ELOVU	245721N 0542018E	MOBUL	251559N 0541841E	TAGDU	252258N 0532153E
ELUDA	235107N 0552905E	MOGIM	244053N 0542820E	TANSU	241367N 0542828E
EMERU	244829N 0550303E	MURGU	243213N 0560320E	TAPRA	242607N 0563803E
EMXI	242105N 0520019E	MUSAP	241754N 0555245E	TARDI	243418N 0560915E
EMPOI	252620N 0560900E	MUSEN	241429N 0543236E	TATLA	254753N 0544008E
EMOTA	255254N 0542414E	MXIT	230229N 0523024E	TONKI	242645N 0544851E
ENEGA	250556N 0560601E	NABIX	251241N 0543147E	TONVO	250500N 0563200E
ESROM	232424N 0525729E	NABUN	240302N 0545021E	TOSNA	251612N 0524116E
GABKO	260404N 054755E	NADNI	251915N 0555659E	TOTKU	253534N 0540410E
GERUL	250001N 0542644E	NALNU	244737N 0560255E	TOVIV	253302N 0551942E
GEVIV	244118N 0545000E	NALPO	255602N 0532045E	TOVOX	245342N 0523429E
GIBIB	255077N 0541712E	NAPMA	241250N 0550131E	TURGO	242403N 0551219E
GIDIS	243600N 0555600E	NORBO	235525N 0551840E	TUDIS	251009N 0550825E
GIDOB	244455N 053953E	NOLSU	251248N 0560738E	TUKSI	252006N 0560525E
GISMO	244743N 0562236E	NORGA	250352N 0555415E	TULON	245511N 0544739E
GODKI	254122N 0534347E	OBNET	260322N 0534514E	TUMAK	25031N 0531108E
GOLGU	231051N 0523100E	OBREV	250200N 0551135E	UKLI	243815N 0535636E
GOMTA	251115N 0563447E	OBVON	241503N 0515522E	UKNAV	244307N 0542955E
GONVI	254240N 0545630E	ODKUN	242608N 0544017E	UKRAG	233056N 0552306E
IGMGL	252950N 0531428E	ORBOL	245134N 0542348E	UKUVO	251228N 0534707E
IMKUD	241513N 0535956E	ORKOB	245309N 0562421E	UKVAK	245147N 0553329E
IMLIP	243648N 0543549E	ORMLD	253354N 0525434E	ULIVA	252647N 0540611E
IMPED	245824N 0560406E	ORNEL	240312N 0551942E	ULODA	243530N 0545301E
ITBON	251426N 0555257E	ORSAR	260430N 0535730E	UMAMI	245114N 0560223E
ITBUL	254910N 0541227E	OTIKI	253229N 0541441E	UMEVU	250545N 0530653E
ITKEV	250104N 0534526E	OVONA	252443N 0524739E	UMIBU	242331N 0543027E
ITLAP	254925N 0555010E	OXARI	252535N 0533458E	VAVIM	241535N 0553623E
ITOMI	250152N 0541151E	PAPAR	264000N 0542700E	VAXAS	244308N 0561807E
ITRAX	241248N 0554749E	PASOV	243841N 0565037E	VEGEG	251837N 0540803E
IVOXI	251240N 0552513E	PATAT	261613N 0560059E	VEKAL	250334N 0550341E
IVURO	251940N 0560915E	PAVAG	251546N 0554042E	VEKOV	245750N 0544925E
KANIP	241040N 0552042E	PEDOG	242225N 0555334E	VUTEB	253645N 0545149E
KAPUM	245815N 053450E	PEDUL	244116N 0560205E	VUXOD	242005N 0543625E
KATIT	224928N 0522923E	PEKEM	224648N 0535942E		
KAXOB	245423N 0532450E	PURLI	253644N 0532436E		



SIGNIFICANT POINTS NOT ON ATS ROUTES

WAYPOINT	COORDINATES
GOLPA	242330N 0535854E
IMTEN	253317N 0555449E
ORPAX	242628N 0534533E
VATIG	243659N 0533241E

FIR EMIRATES FIR FL 145 4500 FT AMSL EMIRATES ACC	FIR EMIRATES FIR FL 145 4500 FT AMSL EMIRATES ACC	FIR EMIRATES FIR FL 145 4500 FT AMSL EMIRATES ACC
UJR EMIRATES UJR FL 800 EMIRATES ACC	UJR EMIRATES UJR FL 800 EMIRATES ACC	UJR EMIRATES UJR FL 800 EMIRATES ACC

CHANGES: Editorial